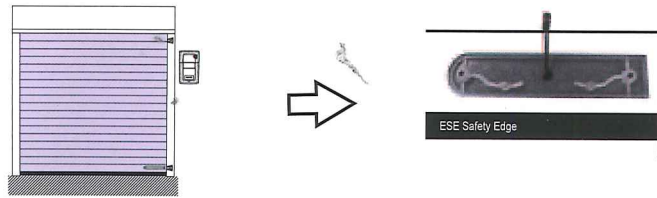
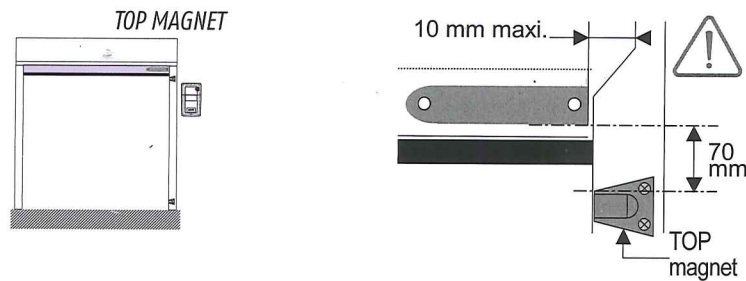


ESE transmitter installation and set up

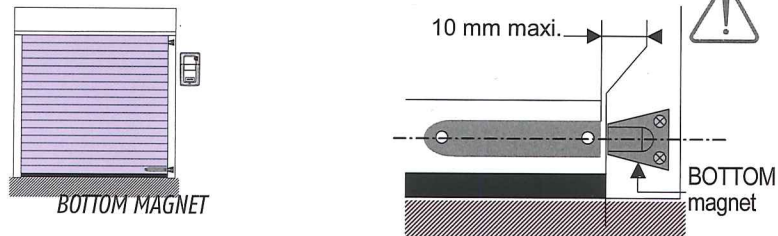
- Secure the ESE transmitter plate to the inside section of the roller curtain on the bottom slat:



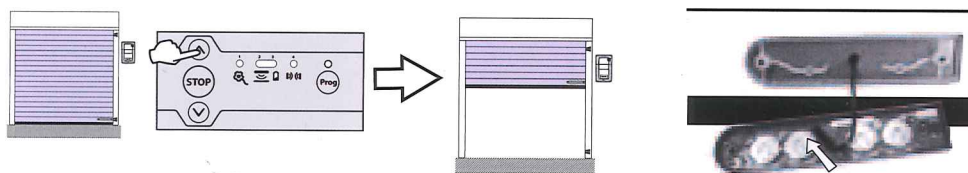
- Operate the door to the open position and secure the TOP ESE transmitter magnet to the guide rail:



- Operate the door to the closed position and secure the BOTTOM ESE transmitter magnet to the guide rail:

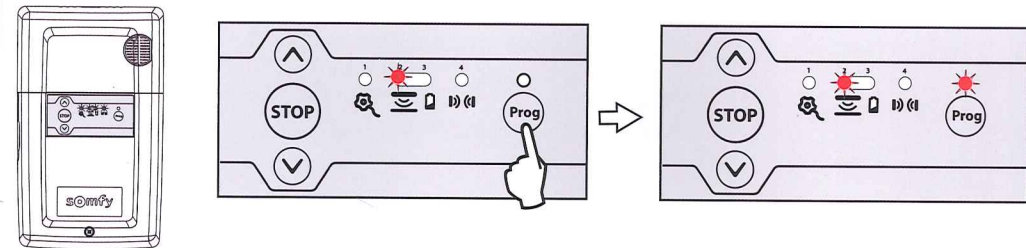


- Operate the door to a mid position and then connect the ESE safety edge connector to the ESE safety edge transmitter terminal as illustrated.

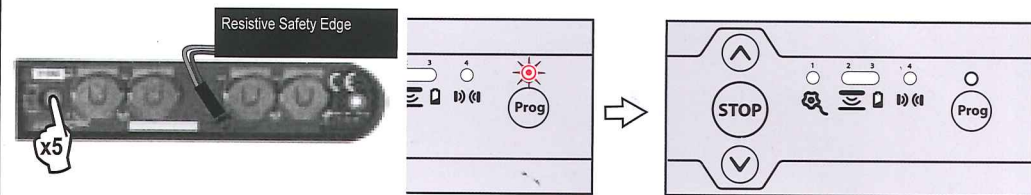


Pairing the ESE transmitter

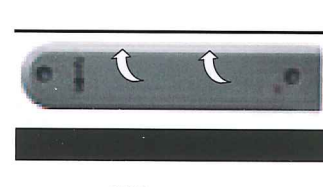
- Press the 'Prog' button on the Rollixo RTS front panel until the LED above the Prog button lights up RED.



- Press the 'PROG' button on the ESE transmitter 5 times until the 'Prog' LED on the Rollixo RTS controller flashes and then goes out.

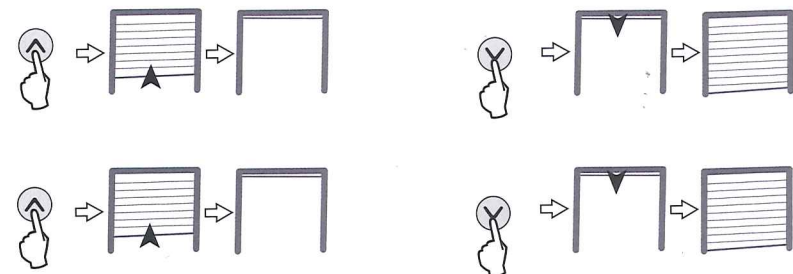


- Flip the front panel of the ESE transmitter over and secure to the plate.



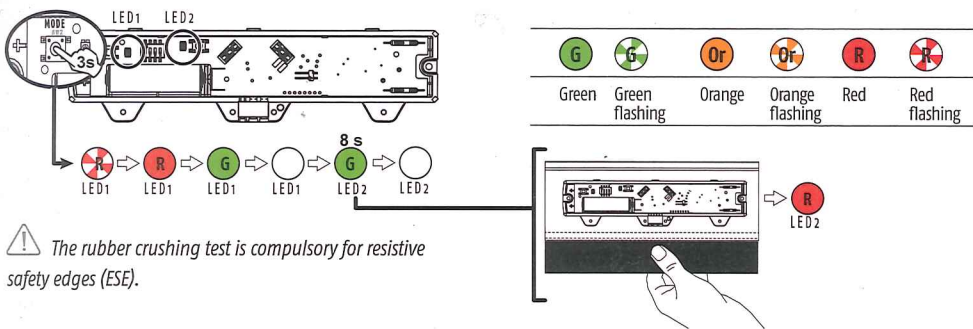
Commissioning the ESE transmitter

- Starting from a mid position, use the Up & Down control buttons to operate the door through two complete Up/Down cycles. Test the safety edge operation once you have completed the 2 x Up/Down door cycles.

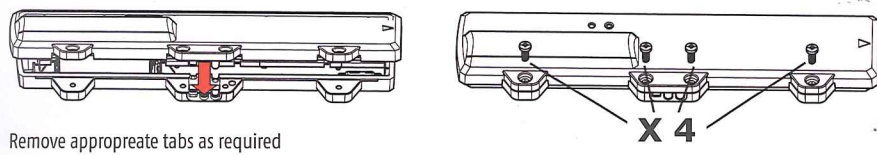


XSE transmitter - Installation instructions

6 Commissioning and testing the safety edge



7 Closing the XSE transmitter

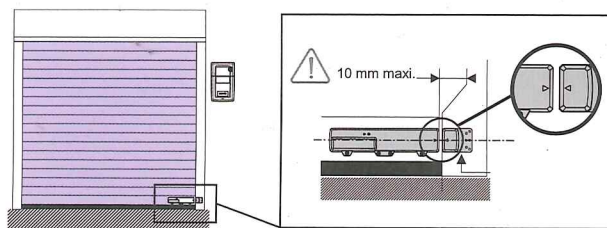


8 Installing a base magnet

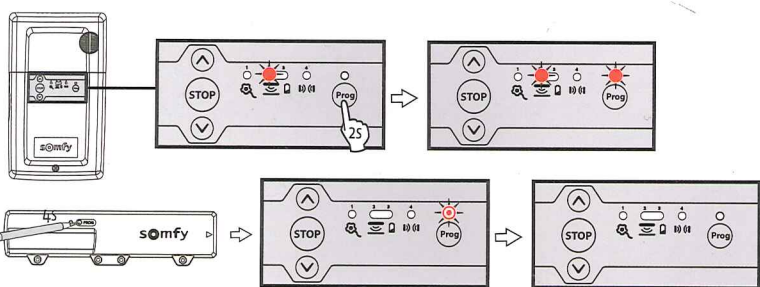
> Compulsory for resistive safety edges (ESE)

> Recommended for optical safety edges (OSE)

- Installing a base magnet:
- extends the battery life
- eliminates the risk of ground detection, secures the closing of the door
- automatically activates the maximum level of sensitivity of the movement sensor
- increases the sensor operating time from 25 to 35 seconds when the base magnet is detected.



9 Programming the XSE transmitter in to the Rollixo receiver



XSE transmitter - Installation instructions

10 Configuring the XSE transmitter operating time

Operating time	Dipswitch 1	Dipswitch 2
25 secs (35 secs if base magnet installed)	OFF	OFF
35 secs	ON	OFF
60 s	OFF	ON

11 Repairs

> Problem on XSE transmitter LED1 and LED2:



Stage 1: CHECK THE BATTERY

Remove the battery then press a button (PROG or MODE) to discharge the residual energy from the electronics. Refit the battery and wait for the automatic battery test to be completed (an orange light flashes to signal the test is under way - it may last up to 2 minutes) (Fig. 4).

- If LED1 and LED2 light up red for 5 seconds, replace the battery and repeat the operations above.
- If LED1 and LED2 light up green for 5 seconds, skip to step 2.

Stage 2: CHECK THE OPERATION OF THE SAFETY EDGE

Launch safety edge detection and test the safety edge (Fig. 6)

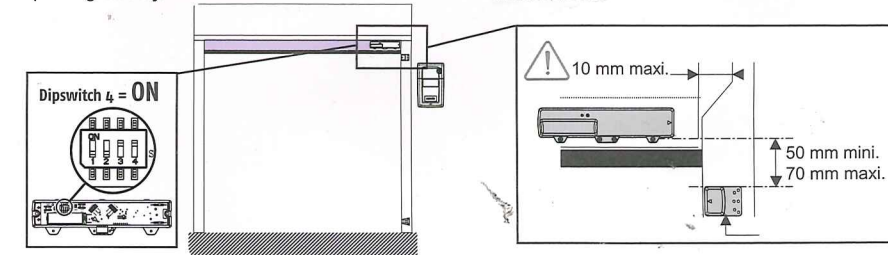
- If LED2 lights up green then the safety edge and transmitter are operating correctly. Squeeze the safety edge and check that LED2 lights up red.
- If not, go to step 3.

Stage 3: DETERMINE THE ORIGIN OF THE FAULT: XSE TRANSMITTER OR SAFETY EDGE?

Disconnect the safety edge.

Test 1: launch safety edge detection (Fig. 6)

- If LED2 flashes red for 8 seconds then the XSE transmitter is operating correctly.



12 Recycling

Never dispose of used batteries with household waste. They must be taken to the relevant recycling points.